

WHAT DO YOU DO IF YOU SUSPECT THAT A CHILD IS BEING TRAFFICKED AND/OR SEXUALLY EXPLOITED?

If you believe a child is in immediate danger,
promptly call 9-1-1.

Contact the Child Advocacy Center at
(631) 439-0480 for assistance and referrals to
services within Suffolk County, NY.
Offices in Central Islip and Riverhead, NY.

If you suspect the child's parent or guardian is
involved in the trafficking or is aware and
failing to protect the child, call the New York
State Central Register for Child Abuse and
Maltreatment at 1-800-342-3720.

If you need additional support or services call
the National Human Trafficking Resource
Center (NHTRC) at 1-888-373-7888 or
Text INFO or HELP to BeFree (233733) for
assistance and referrals.



EAC Network is a not-for-profit human
services agency with 70 programs
throughout Long Island and the New York
Metro area and has been providing
human service programs in the fields of
aging, youth, families, education and
criminal justice since 1969

Neela Mukherjee Lockel
President and Chief Executive Officer

Tania Peterson Chandler, Esq., MPA, SHRM-CP
Chief Operating Officer

Andrea Ramos-Topper, LMSW
Division Director

The Safe Harbour Program is
administered by EAC Network
in partnership with NYS Office of Children
and Family Services (OCFS) and
Suffolk County Department
of Social Services

CONTACT US!

Stephanie Muller, LMSW
Safe Harbour Program Supervisor
Stephanie.Muller@eac-network.org

The Suffolk County Child Advocacy Center at
the Pat & Mary Bagnato Place for Kids
84 Wheeler Road Central Islip, NY 11722

Phone: 631 439-0480
Fax: 631-512-4237

eac-network.org/safe-harbour



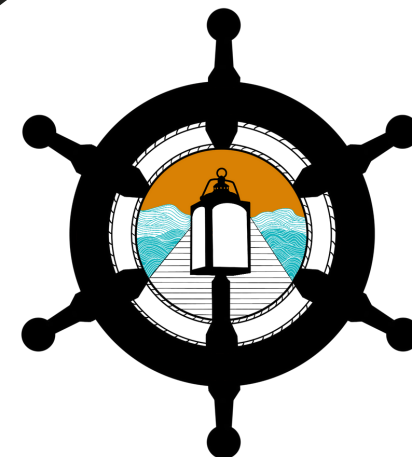
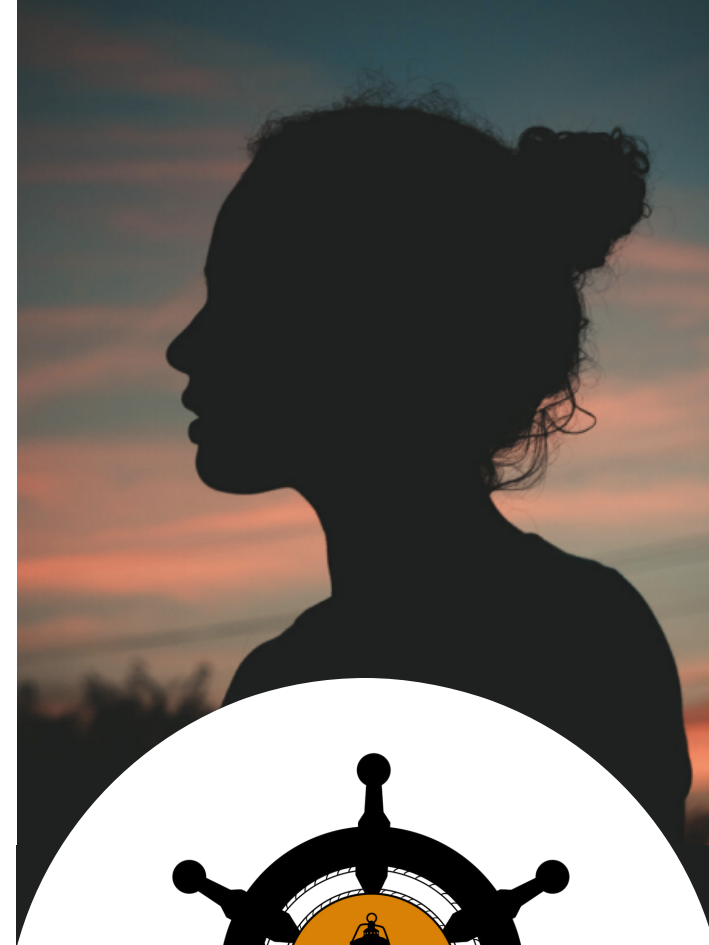
@EACSAFEHARBOUR



www.eac-network.org/safe-harbour



Visit our fundraising campaign
through BONFIRE! All profits
will go to victims & survivors of
human trafficking & youth at-
risk.



SAFE HARBOUR

ADVOCATING FOR AND SUPPORTING
CHILDREN THAT HAVE BEEN, OR ARE AT
RISK OF HUMAN TRAFFICKING AND SEXUAL
EXPLOITATION IN SUFFOLK COUNTY, NY



THE SAFE HARBOUR ACT OF 2008

guaranteed that sexually exploited children would be treated as child victims and be offered services that could reduce trauma, hasten rehabilitation and pave the way for better outcomes. Prior to the enactment of the Safe Harbour Act, sexually exploited youth did not receive the protection of family court, and were instead prosecuted criminally, which did little more than further traumatize victims

"COMMERCIAL SEXUALLY EXPLOITED CHILD" (CSEC)

CSEC is a form of child abuse. Any instance where a person under the age of 18 has exchanged a sexual act or performance in exchange for something of value. CSEC includes: Stripping, exotic dancing or performance, sexually explicit photography or video and minor sex trafficking.

WHO IS VULNERABLE TO TRAFFICKING?

ALL YOUTH ARE AT RISK
Populations with high-risk include:

- Homeless/runaway youth
- Children with history of abuse
- Children with history of out-of-home placements
- Children with disabilities
- LGBTQ youth
- Refugees, immigrants, and non-english speaking children
- Females

HOW TO IDENTIFY A VICTIM OF CHILD SEXUAL EXPLOITATION AND/OR TRAFFICKING?

SOME COMMON RED FLAGS/INDICATORS
INCLUDE:

- Has a history of multiple runaways or AWOLS, or any episodes of child homelessness.
- Presents with an inexplicable appearance of excessive cash, expensive gifts, clothing, or other costly items.
- Youth frequently stays at or is seen at hotels/motels or has possession of hotel keys
- Photos of the youth have been placed online for advertising purposes. / Has knowledge of sexually oriented internet sites
- Mention of a pimp or "daddy" or being in "the life"
- Is in a controlling relationship or has visible signs of physical abuse such as bruising, scars, or hearing loss.
- Association with gangs or neighborhood groups
- Works excessively long hours; is physically exhausted

(NOT ALL INDICATORS LISTED ARE PRESENT IN EVERY
TRAFFICKING SITUATION, AND THE PRESENCE OR
ABSENCE OF ANY INDICATOR IS NOT NECESSARILY PROOF
OF TRAFFICKING)

OUR GOAL IS TO PROVIDE THE EDUCATION,
SKILLS & SUPPORT NEEDED FOR CHILDREN TO
LEAD SAFE AND MEANINGFUL LIVES. EAC SAFE
HARBOUR USES A TRAUMA-INFORMED, VICTIM-
CENTERED APPROACH.

SAFE HARBOUR SERVICES

Case Management

- Community-Based visits
- Risk Assessments
- Safety Planning
- Crisis intervention
- Service planning, through goal setting
- Advocacy and Accompaniment
- Referrals for additional mental health services, residential placements etc.

Outreach

- Awareness presentations for community members and professionals
- "Real-talk" Vulnerabilities & Relationships youth workshop
- Participation in community events and awareness initiatives

The Child Advocacy Center

- The Child Advocacy Center provides a safe, child-focused setting for interviewing and/or medically examining child victims of sexual exploitation/trafficking
- Bilingual staff to assist Spanish-speaking families