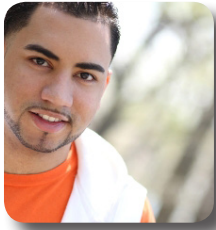


## Client Feedback



*When I started at the New Path Treatment Center, I was very scared at first and confused with different issues and relationships in my life. It was in*

*New Path Treatment Center that I talked about them and got my feelings out. I also received feedback from my group to help me make some decisions and set some boundaries up. I had two great counselors, and it was during my one-on-one counseling sessions that I really was able to open up and talk about my inner fears. They listened which really meant a lot and gave me direction which I trusted and followed. I don't think I could've made it without their help. I'm clean today I have my family back in my life, I have true friends in my life, I now have college credits and I have been accepted into a University. It truly is possible to stop using drugs." – L.P.*



Funding is provided by the New York State Office of Alcohol and Substance Abuse Services through the Nassau County Department of Drug and Alcohol Addiction. Client fees are based on a sliding scale.



EAC Network is a not-for-profit human service agency with 70 programs throughout Long Island and New York City and has been providing human service programs in the fields of aging, youth, families, education, and criminal justice since 1969. Last year EAC Network helped over 71,000 people.

**Lance W. Elder**  
President & CEO

**Tania Peterson Chandler, Esq.**  
Vice President of Operations

**Angela Malone**  
Division Director

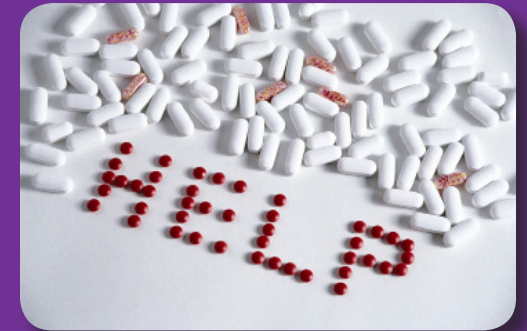
**Elizabeth Day, LMSW**  
Program Director

**Administrative Office:**  
50 Clinton Street, Suite 107  
Hempstead, NY 11550  
(516) 539-0150

[www.eac-network.org](http://www.eac-network.org)  
@EACNet facebook.com/eacnet



Helping people recover from the disease of addiction.



**New Path Treatment Center**  
175 Fulton Avenue, Suite 403  
Hempstead, New York 11550  
(516) 486-3222  
Fax (516) 486-8956



[www.eac-network.org](http://www.eac-network.org)  
@EACNet facebook.com/eacnet

# How can New Path Treatment Center help you?

## What is New Path Treatment Center?

EAC Network's New Path Treatment Center is designed to assist individuals with the disease of addiction to begin their recovery in a safe, full service treatment environment. The program also assists the client's family and significant other to cope with the patient's disease and its effects on themselves.

The program focuses on special populations including women, persons with co-occurring disorders, homeless individuals, persons living with HIV and AIDS, persons involved in the criminal justice system, and those who are in need of detoxification, medical and social services.



## How are participants referred?

Clients can participate in this program under their own initiative or are referred by the criminal justice system or other treatment agencies.

## Is there a fee for services?

Yes. Fees are provided through Medicaid or are based on a sliding scale.



## What are the goals and objectives?

- Attain and continue abstinence from drugs
- Educate and support the client, the family and significant others.
- Design individual treatment plans which identify problems, goals and interventions.
- Provide professional services in a structured outpatient environment.
- Identify and achieve vocational and educational goals.

## How does this program benefit the client & the community?

Chemical dependencies are treatable diseases which can have positive outcomes.

Recovery is a process that is effective and not only heals individuals but also families and communities. It also saves money and other scarce resources in health care, judicial, workplace and other settings.

## What treatment services are provided?

EAC Network's New Path Treatment Center offers a broad range of services such as:

- Individual counseling
- Group therapy
- Specialized groups for men & women
- Anger management
- Batterers education group
- DWI group (approved by NYS OASAS)
- Medical/Psychiatric screening services
- Treatment and medication management for those with co-occurring disorders
- Education series
- Family services
- Referrals for those in need of detoxification, medical, social services, and inpatient treatment
- Intensive outpatient services

## How is progress monitored?

The New Path Treatment Center staff monitor the progress of each client, and report the progress to appropriate referring agencies after the proper releases of information are signed.